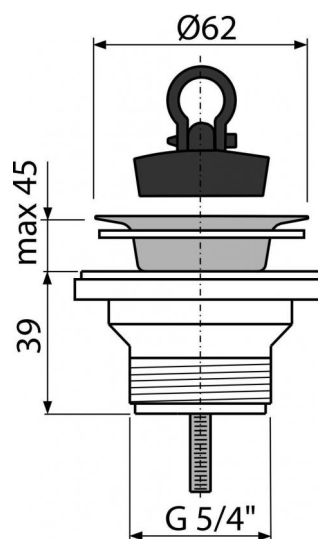
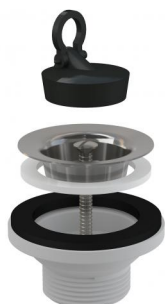


A31

Wash-basin waste 5/4" with stainless steel grid DN63



Application

For wash-basins

Features

- Material: polypropylene
- Thread for connection to wash-basin trap 5/4"

Scope of supply

- Stainless steel outlet grid
- Shower waste body
- PVC plug

Order number, Logistic information

Code	EAN	Weight (kus packing palett)	Dimensions (piece packing)	Quantity (packing palett)
A31	8594045933475	0,0724 8,0100 244,2800 kg	80×60×80 590×240×390 mm	100 2800 pcs

Guarantee

2/3 years

Customs code

39229000

Norms

EN 274

Technical specifications

- Thread 5/4 "